

# FlowMatic® 06

NET WEIGHT - COMMERCIAL WEIGHING



# 06

**Rate:** 30 to 60 big bags/hr.  
**Weight capacity:** 2 tons/big bag  
**Objectives:** very high flow rate & loading station ergonomics

## NET WEIGHING FOR HIGH FLOW RATE AND 100% AUTOMATED

The FlowMatic® 06 model is a complete solution for big bag automatic net weighing packaging (dosing / packaging / conveying). This model is designed for a continuous operation with very high flow to maximize the number of simultaneous operator tasks. The FlowMatic® 06 is designed with all the options necessary for conditioning with minimal human intervention: pre-dosing weighed hopper, containment inflating seal, big bag rotating head hooking, automatic release, height adjustable structure via a controlled pneumatic cylinder, commercial weighing, vibrating table for densification, pallets unstacker, handling conveyor...

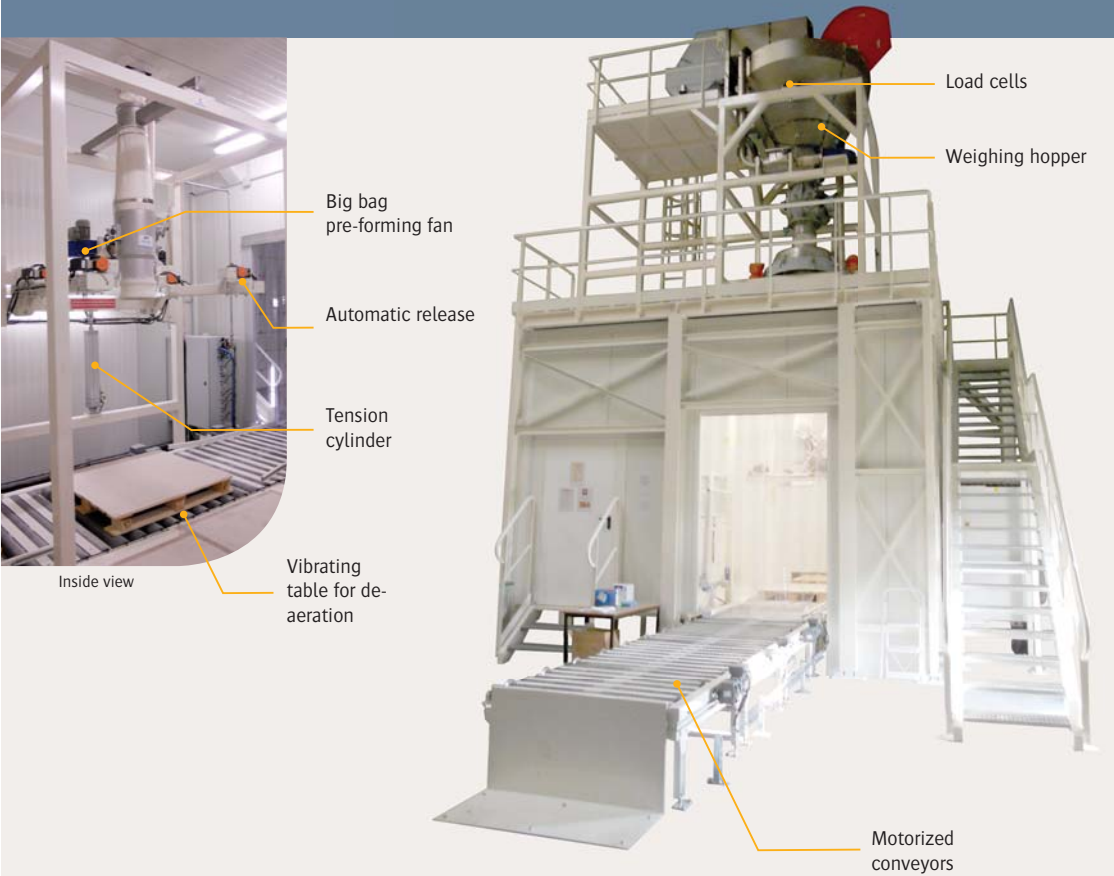
## TECHNICAL SPECIFICATIONS

**Flow rate:** 30 to 60 big bags/hr.  
**Manufacturing materials:** mild steel, SS 304L, SS 316L  
**Finishes:** RAL 9006, micro-blasted, electropolishing  
**Installed power:** 8.7 kW  
**Average power consumption:** 1.5 kW  
**Compressed air consumption:** 10.2 Nm<sup>3</sup>/hr.  
**Service pressure:** 6 bars  
**Input 4 - 20 mA:** 1  
**Input TOR:** 15  
**Output TOR:** 13  
**Weighing precision:** ± 500 grams  
**Dust collecting rate:** 600 m<sup>3</sup>/hr.  
**Maximum dimensions of big bags:**  
**Length x width x height:** 1,200 x 1,200 x 2,400 mm

## OPERATING SEQUENCE

AVERAGE TIME FOR A COMPLETE CYCLE: 1 MIN.

1. The empty pallets are automatically placed on a conveyor
2. The big bag is placed on the fillin station
3. The big bag inlet is connected to the rotating filling head by an inflatable gasket ensuring the sealing
4. The height of the filling spout is adjusted by pneumatic cylinder
5. A fan inflates and shapes the big bag
6. Another fan is used to exhaust the air through a reverse jet filter
7. Big bag filling process with hidden time
8. Start the preparation of another dose (hidden time)
9. The vibrating table provides material densification
10. When the big bag filling sequence is completed, the big bag is automatically released
11. Automatic big bag removal by motorized conveyor



Motorized conveyor for high production rates



Pallet unloader can handle 15 multistyle pallets

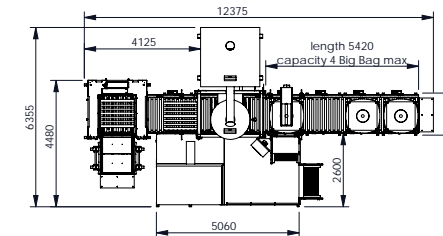
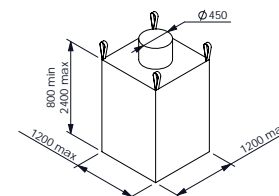
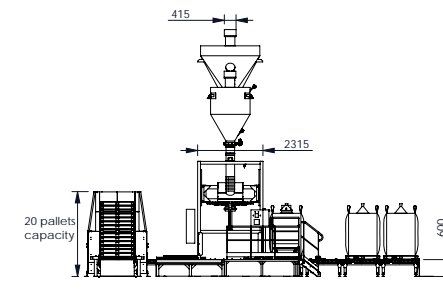
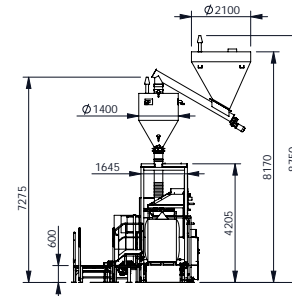


Net weighing hopper for customized filling



Big bag removal by lift truck

Avantages



## Options



Welding system



Big bag covering

See all our options on page 28

FlowMatic® 06